

# Tubular Oil Absorbent Booms and Line Skimmers

## Technical Specifications

AbTech's Tubular Absorbent Booms and Line Skimmers employ the Smart Sponge® Absorbent technology which rejects water while absorbing even sheen levels of hydrocarbons in low energy flow environments.

Tubular Absorbent Booms and Line Skimmers are designed to absorb and encapsulate hydrocarbons and oil in non-confined water flows.

### Applications

- Preserving Ecologically sensitive areas
  - Coastal Marshlands
  - Estuaries
  - Grass flats
  - Shellfish, Crustacean, Fishing and Breeding Grounds
- Boat Docks and Marinas
- Marine Fueling Locations
- Clarifying Wells



### Key Benefits

- Removes or reduces sheen
- Does not absorb water
- Transforms pollutant into a stable solid waste
- Capable of remaining completely buoyant even after being saturated with hydrocarbons
- Oils will not leach or leak
- Waste to energy (BTU value of 10,000 - 18,000 based on type of contaminant)
- Improved safety - no dewatering of oily water after removal
- Longer life - will not deteriorate in water
- Products can be deployed long term and removed when convenient
- Lower labor costs
- Reduced risk - No water absorbed means less weight to pull from water
- Silent sentinel - remains on site indefinitely as insurance against potential releases



### Product Specifications

#### 4" Tubular Boom - Oil Spill Deployment

Shipping Quantity	Length of Boom (feet)	Weight of Smart Sponge (pounds)	Estimated Oil Recovered* (gallons)
Individual	10	17.5	5.9
Carton	50	87.5	29.5
Pallet	400	700	236.5
40' Container	16,000	28,000	9,459.5
53' Truckload	20,800	36,400	12,297.3

\*Based on 2.5:1 absorption ratio. Total absorption may vary.



Absorbent Boom

#### Line Skimmer - Sheen Removal

Product	Dimensions	Dry Weight	Packaging
LS104-10	Single/4 ft. long	22 lbs.	10/carton
LS110-04	Single/10 ft. long	45 lbs.	4/carton
LS304-04	Triple/4 ft. long	32 lbs.	4/carton
LS308-04	Triple/8 ft. long	47 lbs.	4/carton
LS408-04	Quad/8 ft. long	60 lbs.	4/carton

#### Line Skimmer - Oil Spill Deployment

Shipping Quantity	Length of Boom (feet)	Weight of Smart Sponge (pounds)	Estimated Oil Recovered* (gallons)
Carton	16	22.4	11
Pallet	480	672	318
40' Container	9,600	13,440	6,357
53' Truckload	12,480	17,472	8,264

\*Based on 3.5:1 absorption ratio. Total absorption may vary.

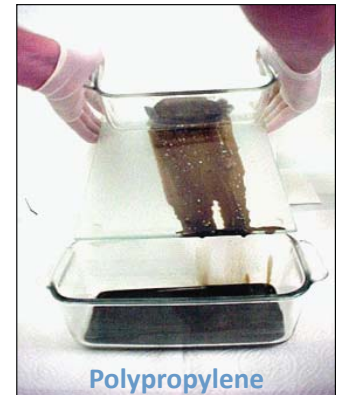
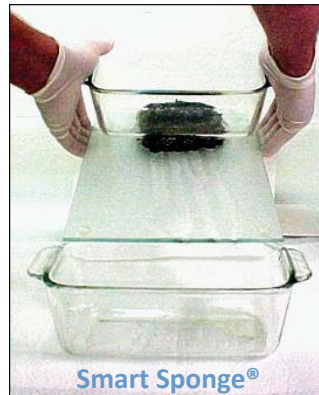


Line Skimmer

**Note** – AbTech Line Skimmers are not designed for use in fluid operating temperatures exceeding 55°C (130°F). Improper use of Smart Sponge® products may cause them to become structurally compromised, possibly resulting in the loss of absorbent media or obstruction of flow. Long exposure to UV light (over 12 months) may result in slight discoloration; however, this discoloration will not significantly affect performance.



## Smart Sponge Versus Commonly Used Polypropylene



Smart Sponge Absorptive polymers have a distinct advantage over traditional polypropylene booms used in oil spill cleanup. These photographs demonstrate that once oil comes in contact with Smart Sponge it is permanently encapsulate in the structure of the polymer cannot be released under any amount of pressure. This makes the Smart Sponge material operationally superior for removing sheen levels of hydrocarbons (15 – 300 ppm).

### Disposal Options

As local conditions, product use, and exposure can vary widely, the end user must determine the most appropriate disposal method for a spent Smart Sponge® or Smart Sponge Plus® product. However Smart Sponge® samples saturated with hydrocarbons both in the lab and in the field have been tested according to the EPA's Toxicity Characteristic Leaching Procedure ("TCLP"). These tests show that Smart Sponge® is a "non-leaching" (i.e., non-detect or "N.D.") product. As a result, Smart Sponge® technology can afford many cost effective and environmentally friendly disposal options. The following waste disposal and resource recovery industries have accepted spent Smart Sponge® products for disposal and/or recycling.

**Waste-to-Energy Facilities** - A specialized segment of the solid waste industry has used spent Smart Sponge® as an alternative fuel in the production of electricity. WTE is acknowledged at the federal level as a renewable energy source under the Federal Power Act, Title IV of the Clean Air Act and is a participant in the Department of Energy's National Renewable Energy Program.

**Cement Kilns** - This industry has used the spent Smart Sponge® as an alternative fuel in the production process of Portland Cement. This process is considered a beneficial reuse of waste products. The BTU value of spent Smart Sponge® is consistently above the average acceptable levels set for this high temperature.

**Landfills** - As discussed above, spent Smart Sponge® products have been classified as a solid waste and have been accepted at Subtitle D Landfills.

For more information about the Smart Sponge® technology, visit [www.abtechindustries.com](http://www.abtechindustries.com) or call 1-800-545-8999.

Note – AbTech Line Skimmers are not designed for use in fluid operating temperatures exceeding 55°C (130°F). Improper use of Smart Sponge® products may cause them to become structurally compromised, possibly resulting in the loss of absorbent media or obstruction of flow. Long exposure to UV light (over 12 months) may result in slight discoloration; however, this discoloration will not significantly affect performance.

Please keep in mind that, depending upon local conditions, product use, and exposure, a spent Smart Sponge® product could contain one or more of a wide range of contaminants that may impact available disposal options. As a result, generators of spent Smart Sponge products must have their waste analyzed, tested, and classified to determine the appropriate disposal method.

AbTech Industries does not take any responsibility for handling, transport, disposal, or recycling of spent Smart Sponge® products. For a more detailed disposal/recycle overview, please see the "Smart Sponge® Products Disposal Option" documents available upon request from AbTech Industries.

AbTech Smart Sponge® products have been extensively tested both in the laboratory and in the field – with additional testing on-going all the time. Nevertheless, because local conditions, product use, and exposure can vary widely, individual results may differ.

AbTech Smart Sponge® products must be used properly and in accordance with all manufacturer instructions. AbTech Industries does not take responsibility for any product misuse.



4110 North Scottsdale Road • Suite 235 • Scottsdale, AZ 85251  
480.874.4000 • 800.545.8999 • [www.abtechindustries.com](http://www.abtechindustries.com)

MAKERS OF  
**smart sponge**  
PRODUCTS

09/23/10